

# checkware

## DIGITAL CHECKLIST MANAGER

The software solution for all kinds of checkings, inspections and audits.



The **Checkware Digital Checklist Manager** will help you to manage and evaluate forms and checklists in a very efficient way. In many fields examinations are currently carried out by means of standardized forms and checklists.

If this is done in form of a hardcopy, the information gained must be digitally compiled afterwards to be able to evaluate it statistically.

### Checkware at a glance

- Digital checklists and forms
- Manual signature with digital signature
- Central data memory
- Companywide compilation of reports
- Integration into existing system architectures
- Data export into different formats (e.g. Microsoft Excel)
- Individually extensible by means of open interfaces

### Advantages

- Habitual layout of checklists maintaining the Corporate Design
- Support of user during compiling by means of input review
- Quick run times: data are available immediately after compilation
- Evaluation can be carried out independent of location
- Mistakes are avoided during data transfer
- Individually extensible
- More efficient organization of business processes

### Efficient workflow

**Checkware Digital Checklist Manager** allows the mobile acquisition of checklists on-site and the subsequent synchronization with the server or the stationary acquisition at a workstation.

With **Checkware Digital Checklist Manager** forms and checklists can be created in a simple way and then uniformly be implemented throughout the company. The software allows the realization of your own designs and layout templates.

The integrated authorization system makes it possible to place only parts of the system at the disposal of individual users so that colleagues will only see the forms and checklists that are relevant for his or her job.

### Basic functions

- Components freely definable: Fields for checklists and master data
- Individual layout in your own Corporate Design
- Powerful synchronization mechanism with offline ability
- Audit-proof archiving in central database
- Multi-lingualism prepared
- Elaborate authorization system
- Flexible reporting
- Documentation of older form versions
- Freely definable evaluations via interfaces possible
- Connection of additional master data systems possible
- Compilation of digital signatures

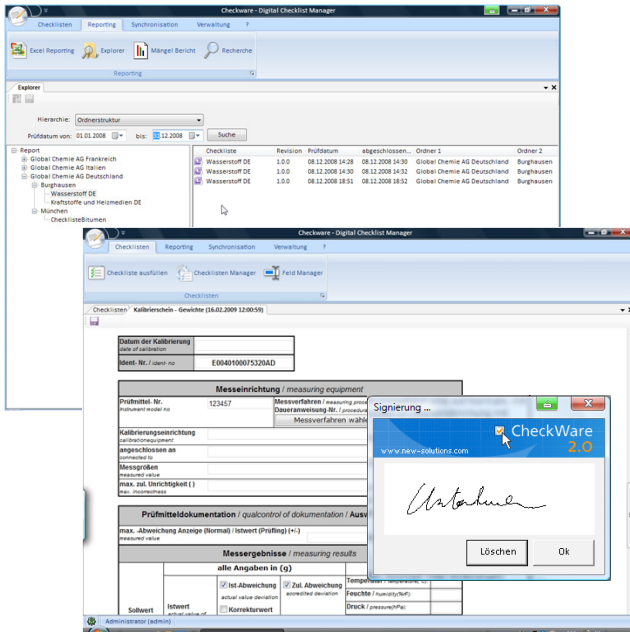


## Operation sequence

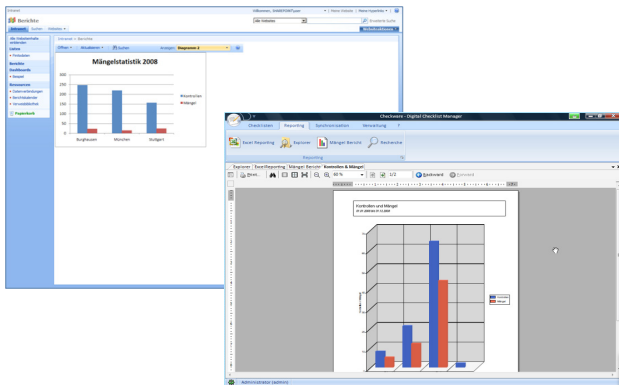
Within the application the data to be compiled are defined as fields for checklists.

Afterwards the necessary checklists are compiled from these fields and generated over the Infopath Designer as standardized Infopath Forms. The layout can be freely designed.

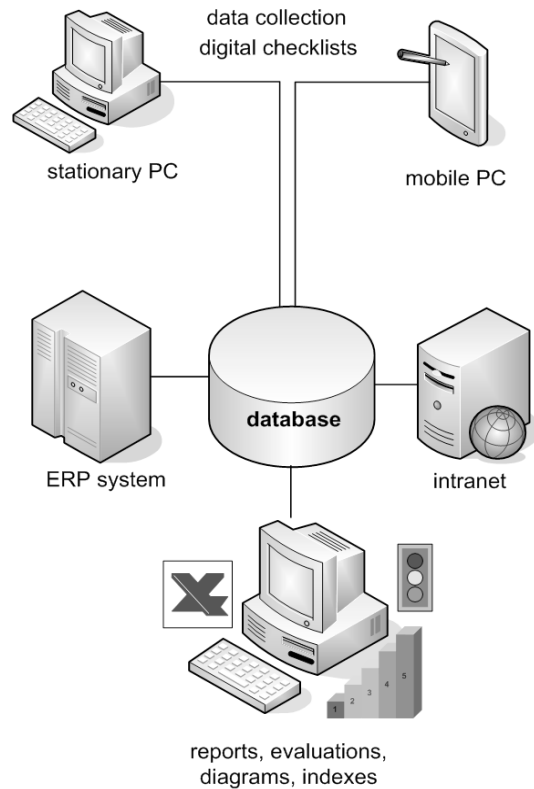
After release of the forms in the organization hierarchy these can be used for compiling data.



The user will select the needed checklists and fill them in. After storing, the data are immediately being imported into the local database and (with existing connection) matched with the central database server. From this moment on the data are available for overlapping evaluations.



## System architecture



## Technology

Checkware Digital Checklist Manager is based on a modular and extensible application kernel on the basis of .NET Framework.

Forms are created with Microsoft Infopath.

## Technical requirements

Checkware Digital Checklist Manager requires a central database server (we recommend Microsoft SQL Server as of version 2008).

For the Client-Installation, Microsoft Windows as of version XP with installed Microsoft .NET-Framework and a network access are necessary.

## Contact details

## new solutions

business software

**Location München:**  
New Solutions GmbH  
Konrad-Zuse-Platz 1  
81829 München

**Postal address:**  
New Solutions GmbH  
Hanns-Schwendt-Straße 11  
81829 München

**Location Burghausen:**  
New Solutions GmbH  
Marktler Straße 61  
84489 Burghausen  
Tel. +49 (0) 8677 8776-0

Phone +49 (0) 89 4545968-0  
Email: [info@new-solutions.com](mailto:info@new-solutions.com)  
Internet: [www.new-solutions.com](http://www.new-solutions.com)

[www.checkware.net](http://www.checkware.net)



Microsoft Partner

Gold Independent Software Vendor (ISV)  
Gold Portals and Collaboration